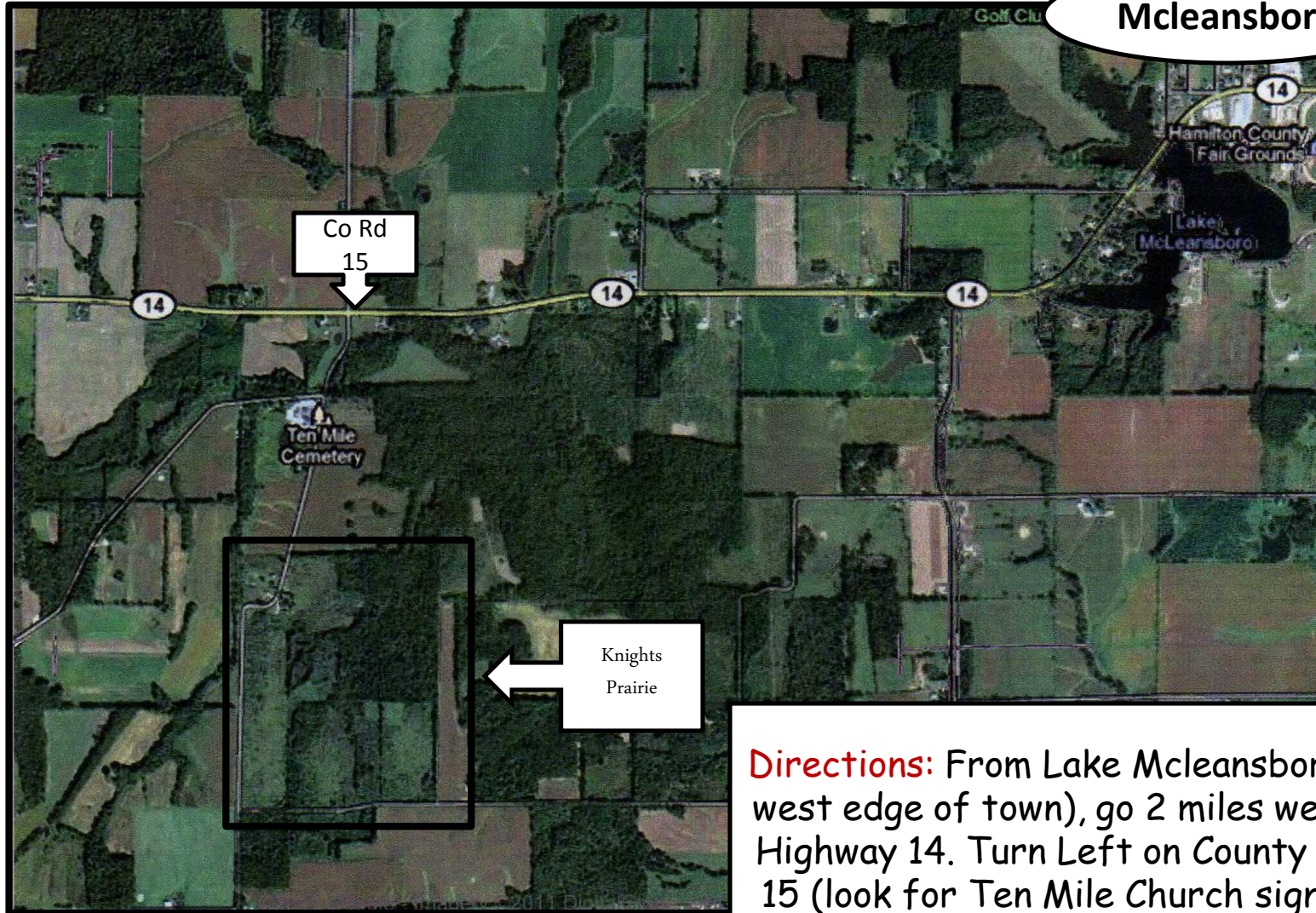


## Mcleansboro



Co Rd  
15

Ten Mile  
Cemetery

Knights  
Prairie

**Directions:** From Lake Mcleansboro (on west edge of town), go 2 miles west on Highway 14. Turn Left on County Road 15 (look for Ten Mile Church sign), go  $\frac{3}{4}$  mile south. Look for signs.